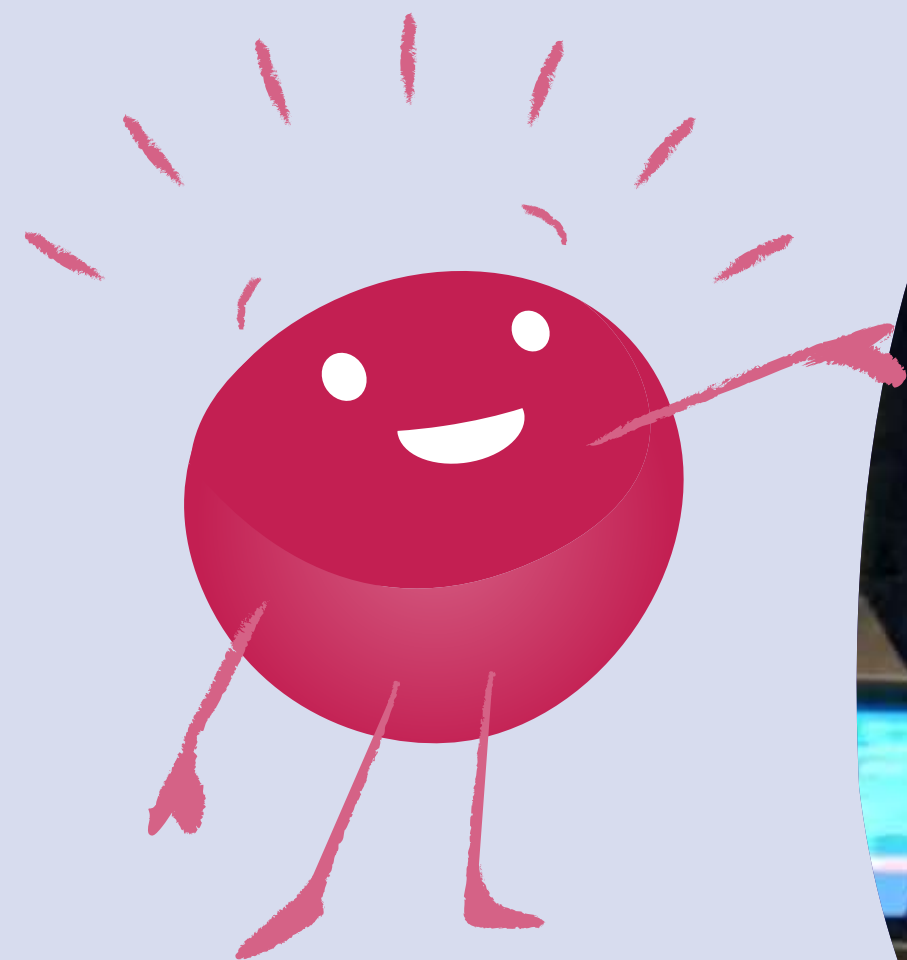




Enriching lives Unlocking potential Building friendships



Welcome to Grove Cottage



September 2022 marked the beginning of an exciting year at Grove Cottage.

Our members immersed themselves in a wide range of activities, both in Grove Cottage itself and by exploring the local community.

It was a year of growth, connection, and deepening our ties with the local area, reinforcing our commitment to creating a supportive and enriching environment.

Our Mission

To provide social and educational activities for people of all ages with learning disabilities and special additional needs; to help them develop their potential, avoid social isolation by supporting lifelong friendships, and to provide respite for their families.

Our Vision

A world in which every individual has the opportunity to learn, develop, integrate into society and exercise choices, and where families can enjoy a regular family life.

Our Value Statement

Grove Cottage is a professional, passionate community, enriching lives and giving those who learn differently the opportunity to achieve their potential.

Contents

Section 1

- 3 At A Glance
- 4 Grove Cottage Story

Section 2

- 6 Fundraising
- 7 Grove Cottage Stories
- 12 Year In Review
- 15 The Voice Of Our Members And Their Families

Section 3

- 16 Statement Of Financial Activities
- 18 Balance Sheet
- 19 Statement Of Cash Flows
- 20 Notes To The Financial Statements

At a Glance

We are a place of belonging, where lifelong friendships form and memories are made.

We provide social and educational opportunities for our members and enable their families and carers to get vital respite. Through our activities, clubs and services, we change lives, shape futures, and enable those who attend Grove Cottage to reach their full potential. Our members need intensive support throughout their lives, and we offer a lifeline to their families.

Nursery

Our Ofsted-regulated Nursery welcomes pre-school children from birth who have complex needs. We also provide help and support for the people who care for them.

Speech and Language Therapy

We help children and young people to communicate more effectively. This has a huge impact on all areas of their lives.

Children and Young People

Our Saturday clubs and Holiday Clubs provide an opportunity for children and young people to meet and make friends, learn new things and have fun, whilst providing vital respite for their families.

Adult Services

Our music, performing arts, gardening, sports, and social clubs enable our members to take part in fun activities and learn new skills with their friends in a supportive environment.

£550k

We raised £550k this year to maintain the facilities and services that we offer.

We help people of all ages

Currently our youngest member is aged 2 years old and our oldest is 70 years old.

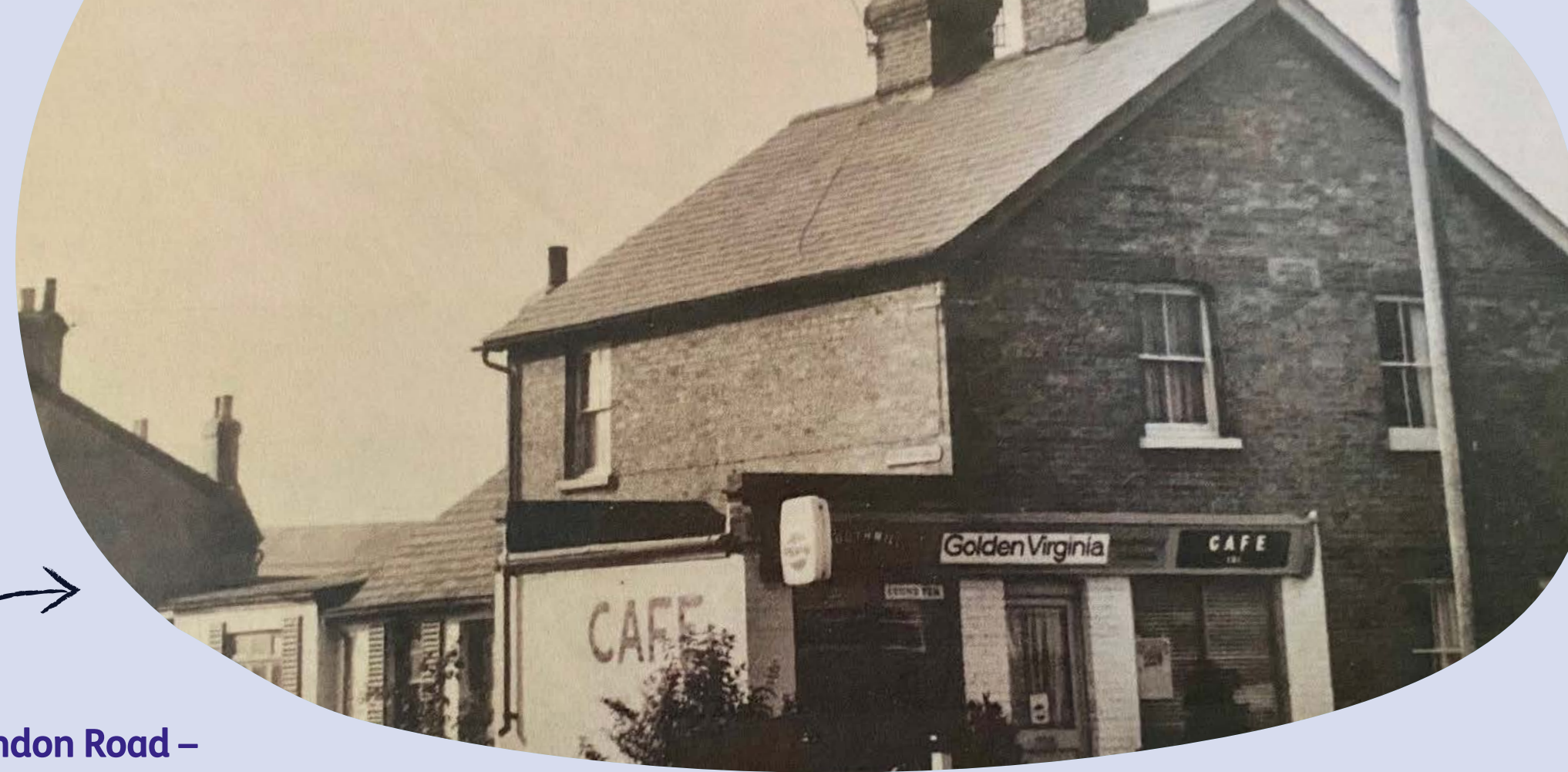


Open-door policy

We have an open-door policy and will support people regardless of location – we are delighted to help anyone who can get to us.

Grove Cottage Story

For six decades Grove Cottage has been a lifeline for adults and children with learning disabilities and special additional needs.



151 London Road – ‘Grove Cottage’ 1971



Our organisation was founded in 1966 by a group of parents who had children with learning disabilities.

They needed better services for their children, and had a vision to create a safe place that could offer a brighter future for all local children with learning disabilities. In 1971 they purchased 151 London Road – ‘Grove Cottage’ – which was officially opened in June 1972 as a social and recreational centre.

The building next door was also purchased in 1994 to allow for extended services.

What started as a modest initiative now supports over **180 individuals and their families each year.**

We provide a vibrant hub for individuals with learning disabilities of all ages, offering:

- An Ofsted-regulated SEND (Special Educational Needs and Disability) Nursery
- Speech and language therapy
- Out-of-school clubs on Saturdays and during school holidays
- A whole range of social support groups and special interest clubs for older teens and adults

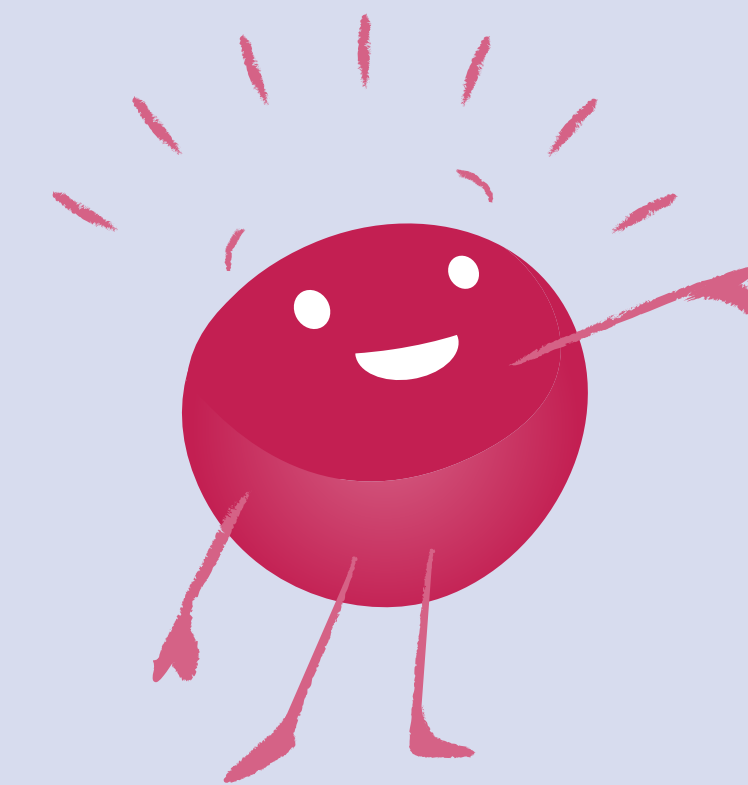
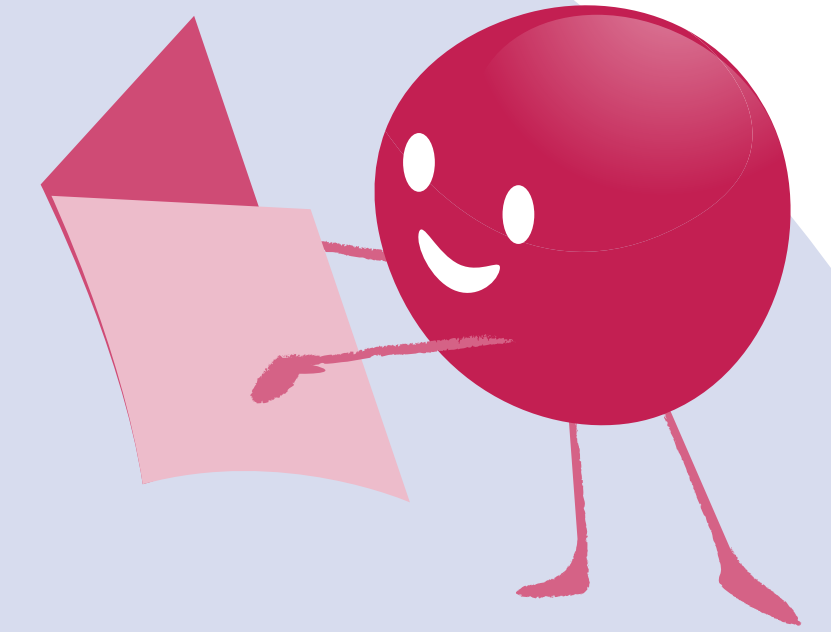
These services are a vital part of our members lives, helping to develop their potential, nurture friendships, and provide respite for their families.

A busy hub of activity for nearly 60 years, our beloved building is showing its age and needs urgent attention. Now, thanks to a generous legacy and other generous supporters, we can redevelop and modernise our facilities to meet our community’s evolving needs.

Our new building will offer:

- Enhanced services
- Improved safety, accessibility, and dignity
- Increased space to support more people

Rebuilding Grove Cottage will enable us to support our community for many years to come. We will continue to seek funding from various sources, including grant making organisations, individuals, corporate partners and a public appeal. We aim to raise the necessary funds to begin demolition in 2024 and reopen our doors to our members in 2025.

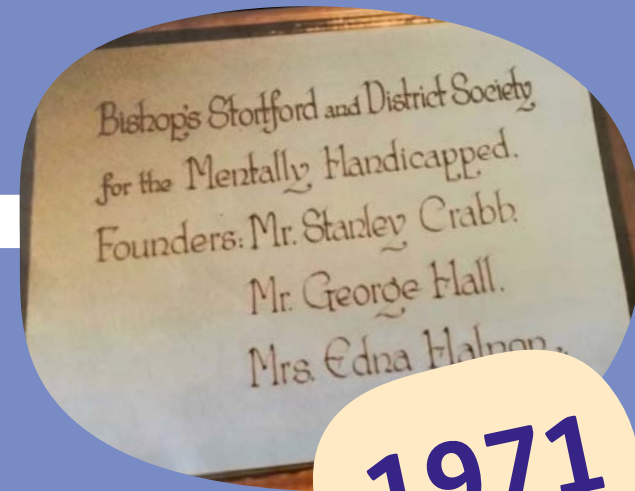


Grove Cottage Story



The local society opens in church halls and homes

1966



Stanley Crab and friends join forces to buy 151 London road

1971

We open!



We buy and extend into the house next door

1974

Today



We support people with learning disabilities & additional needs



Our members enjoy learning valuable life skills



We help our members meet and make friends, while having fun



We give our youngest members the very best start in life

But now our building is crumbling

Future



Thanks to a generous legacy, and support from individual donors and organisations...

We have begun to realise our dream of rebuilding Grove Cottage!

Offering safety, accessibility and dignity for all members

Providing lifelong support for the next 60 years and beyond!

Fundraising

In an increasingly unpredictable economic climate, and with the cost-of-living crisis in full swing, the fundraising team focussed on strengthening their ties with our local community and generous supporters to ensure Grove Cottage could continue to meet the needs of our members.

Through our fundraising and communications efforts, we increased awareness, improved community engagement on multiple levels, and diversified our fundraising income streams. We are incredibly grateful to the individual donors, organisations and volunteers who work with us to support our Fundraising activities.



In 2022, we were proud to begin our partnership with Helping Herts, the official charity of Stort Valley Rotary Club. We completed our first Great Big Walk for Herts in September 2022, walking 12 miles along the Hertfordshire Way, to raise money for Helping Herts and Grove Cottage.

Support from Trusts and Foundations remains our largest source of income and is essential in covering our vital running costs. We would like to extend our particular **thanks** to:

- Crouchfield Trust
- David Family Foundation
- The Foyle Foundation
- The Henry Smith Charity
- Hertfordshire Community Foundation
- James Tudor Foundation
- The National Lottery Community Fund
- Postcode Places Trust
- The Valiant Charitable Trust
- And a long-standing generous donor who prefers to be kept anonymous

In addition, the following supporters made significant donations and pledges towards our forthcoming redevelopment project

- David Doherty
- Stansted Airport Community Trust
- The Archer Trust, in memory of Ruben How and Catherine Archer
- Bishop's Stortford Town Council

Our partnerships with our corporate supporters including HardSoft, Mantle, Emperor and DOC continued to flourish over the year. We are incredibly grateful for their support and advice

“

We've been proud to sponsor Grove Cottage for years, and at DOC Cleaning, we're all about making a real difference in our local community. By supporting Grove Cottage, we're helping the people there grow and thrive, while also encouraging our staff to get involved and help make the world a kinder, more inclusive place. Our team is excited to be part of this journey with Grove Cottage.

– Jeff Silver, Head of ESG, DOC Cleaning

“

HardSoft Computers sponsors Grove Cottage's events, and our staff get involved in all sorts of fundraising activities from golf days to jumping out of planes! We are proud supporters of this local charity that gives an amazing service to a group of people with very unique challenges.

– Philip Morgan, Co-Founder, HardSoft

Josh's Story



Emotional Wellbeing

“

I'm Josh, and I'm 26 and a half years old. I have Down syndrome and special needs, and I've been part of the wonderful Grove Cottage family since I was just three. I still look forward to attending the clubs every week.

Grove Cottage means the world to me. It's not just a charity; it's a place that has always supported me and felt like a second family. I can't thank them enough.

During the difficult days of the COVID-19 lockdowns, my mental health suffered, and I'm still dealing with anxiety today. In 2021, my mum gave me some advice: "Be a helper to others." I took that to heart.

With Grove Cottage's love and support, I've had the chance to rebuild my confidence and try new things. Now, at Grove Cottage clubs, it's not just about what I learn but also how I can help others. I've introduced and led meditation sessions in our groups which are a safe space, surrounded by friends who make me feel at home. It's my way of helping others find peace and comfort, and it helps to calm my anxiety too.

Looking ahead, I have big dreams. I want to own my own house and make my family proud. With the support of Grove Cottage, I believe I can achieve these goals."

– As told by Josh, with the help of his sister Mel



Ollie's Story

Supporting the whole family



“ There were very few places that would agree to look after him, let alone places we felt we could trust to keep him safe.

Ollie started attending a playgroup at Grove Cottage when he was just one year old. At the time, we were navigating the unknown world of special needs, full of doctors and diagnoses. This group allowed us to have experiences with Ollie that felt typical for his age while also offering much-needed support. Through Grove Cottage, we made lifelong friends who have been with us throughout our journey.

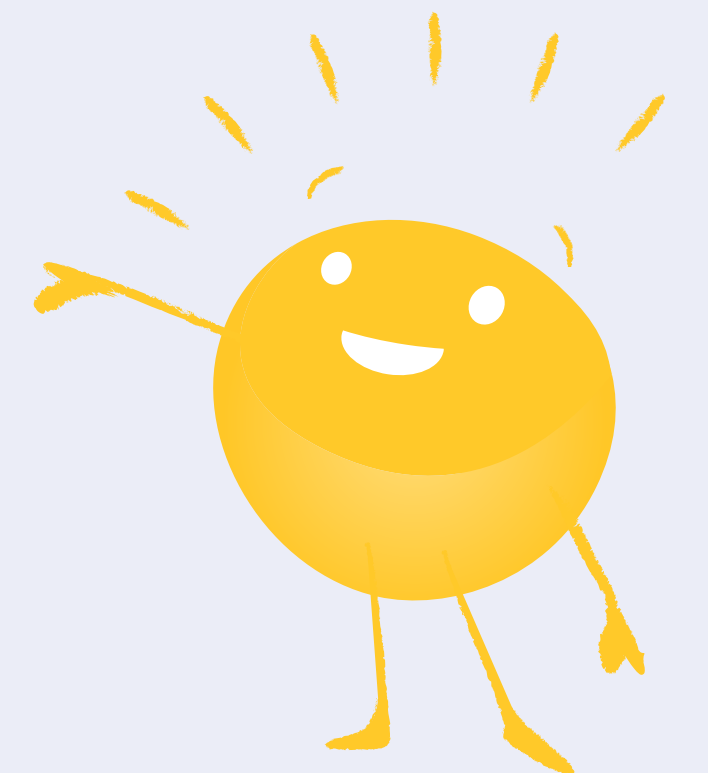
As Ollie got older, Grove Cottage provided essential respite for us as a family. His behaviour became harder to manage, and there were very few places that would agree to look after him, let alone places

we felt we could trust to keep him safe. At Grove Cottage, Ollie has never been made to feel “too much” to manage. It’s given him a space to enjoy himself while giving us valuable time with our daughter and a break as a family.

Now, Ollie is an adult, and his needs have changed once again. Yet, Grove Cottage continues to support him, and us. Ollie attends clubs that provide vital opportunities for socialising and friendship, and he benefits from the relationships he’s formed with the dedicated staff and volunteers.

Grove Cottage has been with us throughout Ollie’s life and will continue to be a part of his future. Their unwavering support has been invaluable, and we honestly don’t know where we’d be without them!

– Written by Ollie’s Mother and sister



Rose & Ruby's Story

Rose was born with a unique genetic fault, resulting in severe learning disabilities, developmental delay, and complex medical needs. She is also diagnosed with autism and doesn't speak any words.

She is not only my older sister but also my best friend. As her younger sister, my world often feels different from my peers', but I am so incredibly grateful.

Thanks to Rose, I've learned a whole new form of communication, Makaton, and have joined one of the most inspiring and welcoming communities there is.

Grove Cottage has supported my family and Rose in many ways. It has given her a place where she can truly be herself, build friendships, and have meaningful experiences. For us, it's been a source of respite, and it's connected us with other families who share similar experiences.

Rose means the world to me and is truly the greatest sibling I could ask for.

– Written by Rose's sister Ruby

“
Grove Cottage has supported my family and Rose in many ways.



Freya's Story

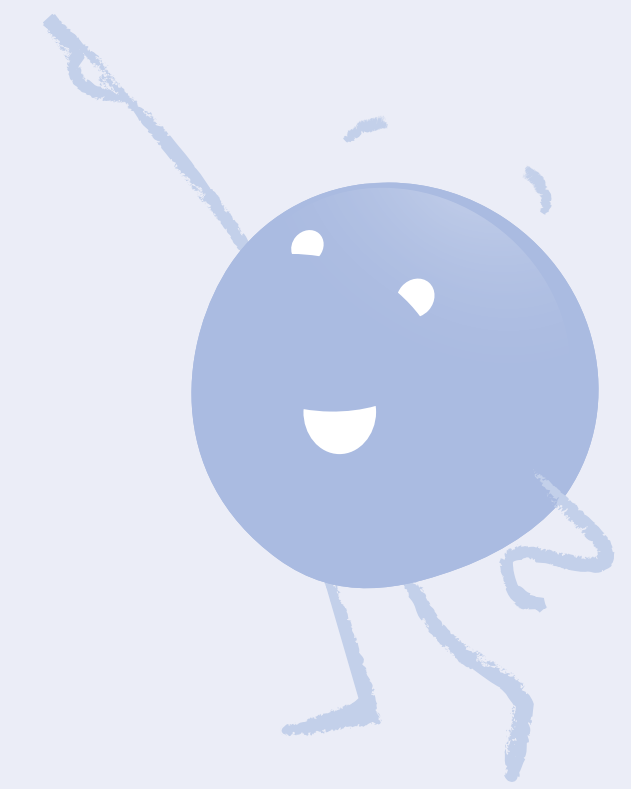


Working for Grove Cottage

I've been working at Grove Cottage for eight years, and I can't think of another job I'd rather do. It's such a unique place to work, where every day is different. Seeing our members grow and develop through play and social interaction is truly rewarding. Whenever I am at work, I think about my brother Zac, who's been attending Grove Cottage clubs for over 10 years. His journey inspires me to provide the best possible care for all our members. I work with a team of people who share

similar experiences, which creates a supportive and caring environment for both staff and members alike. As a staff member, I feel valued and respected. My opinions are listened to, and I've had opportunities to gain qualifications and training. I'm proud to wear my purple polo shirt and work with the incredible Grove Cottage team. I've been running the Get Active Club since July 2016. We've changed location, staff, volunteers, session times, and even the day

“
It's an honour to be a part of the Get Active Club, our members' journeys, and the Grove Cottage family.



of the week, but the members still come along. Working with most of our members for 8 years, I've seen amazing growth, not just in their sporting abilities but in their personal development too. It's an honour to be a part of the Get Active Club, our members' journeys, and the Grove Cottage family.

– **Written by Freya Boittier**

Michael's Story

Early years support

When Michael first started at Grove Cottage in September 2022, he could barely speak. The most he could say was “Up” when he wanted to be carried. He wasn't walking, and his hypermobility made it difficult for him to be as active as other children his age.

We searched for childcare providers but couldn't find anyone who could meet his needs without a diagnosis. We were concerned he'd be forgotten or left in a corner. Then, we were recommended to contact Grove Cottage.

After joining, Michael blossomed. He's now full of life, energy, and has a passion for learning and singing. His key worker understood Michael's needs and helped teach him various ways to communicate. Learning Makaton was a huge breakthrough for us, both at home and at Grove Cottage.

The dedicated staff worked closely with Michael and the speech and language therapists (SLT), and his vocabulary has improved immensely. Without the support and care of the Grove Cottage team, we don't know where Michael would be now, but it's clear he wouldn't have developed as much as he has today.

Michael was able to attend a mainstream pre-school to prepare him for the start of school. We can confidently say that Grove Cottage has laid the foundation for his future success, and we cannot thank them enough.

– Written by Michael's Mother

“

There were very few places that would agree to look after him, let alone places we felt we could trust to keep him safe.



Year in Review

Following two years of navigating the COVID-19 pandemic, 2022 marked a turning point as our members enjoyed reconnecting with their friends and we deepened our community connections.



Grove Grows Gardening Club

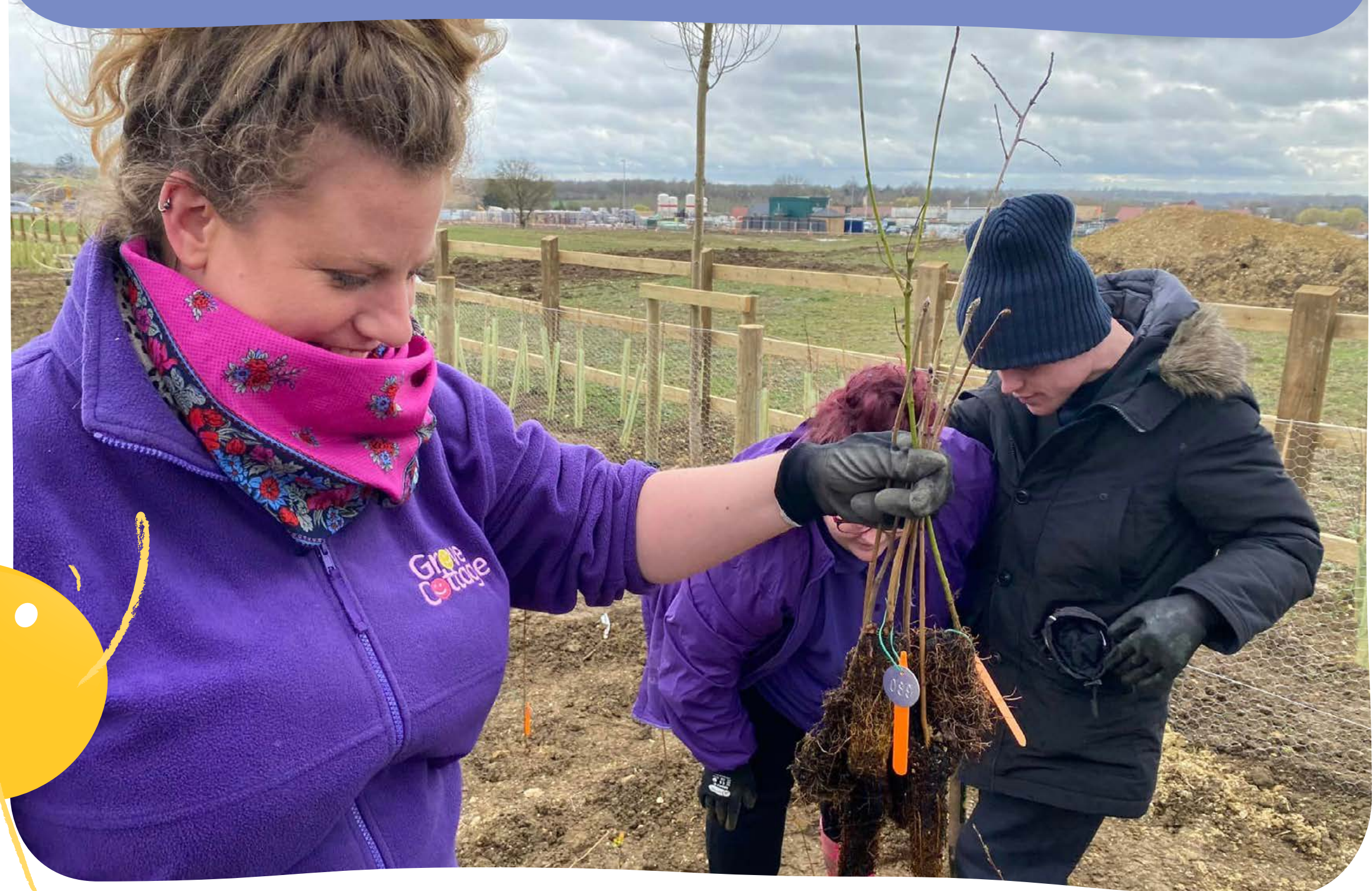
We launched our Grove Grows gardening club at Manor Fields Primary School community garden; providing a place for our members to enjoy being outdoors with their friends, whilst learning to grow and care for plants, fruit and vegetables.

Each member contributes to communal areas and tends to their own plot, harvesting their own plants and produce to take home and enjoy.

Our Grove Grows group **planted 200 saplings** on St James' Park, a local building development. This was in collaboration with Earthwatch Europe Tiny Forests, an organisation that encourages mini forests in urban areas. These saplings will grow to full size in 20 years.



“ It is so important for the local community to work together to maintain green spaces that will help maintain a better future for all. We look forward to and will take pride in watching the Tiny Forest grow over years to come. – *Jocelin Warren, Grove Cottage’s Operations Manager* ”



Year in Review (Continued)

Swim Days

We ran several events for our Grove Cottage community, welcoming our members of all ages, along with their families and carers.

One highlight was our Swim Days at Grange Paddocks leisure centre, where exclusive access to the pool and function rooms enabled us to unite all our members and the people who care for them, to have an enjoyable day together centred around fun and wellbeing.

Nursery

Following a cautious approach during the 2020 and 2021 pandemic, 2022 marked a return to inclusive extracurricular activities for the children in our specialist nursery, much to their delight. These included weekly swimming lessons, exciting day trips, Attention Autism sessions, and visits from Annie the Laughter Specialist and the much-loved therapy dog.

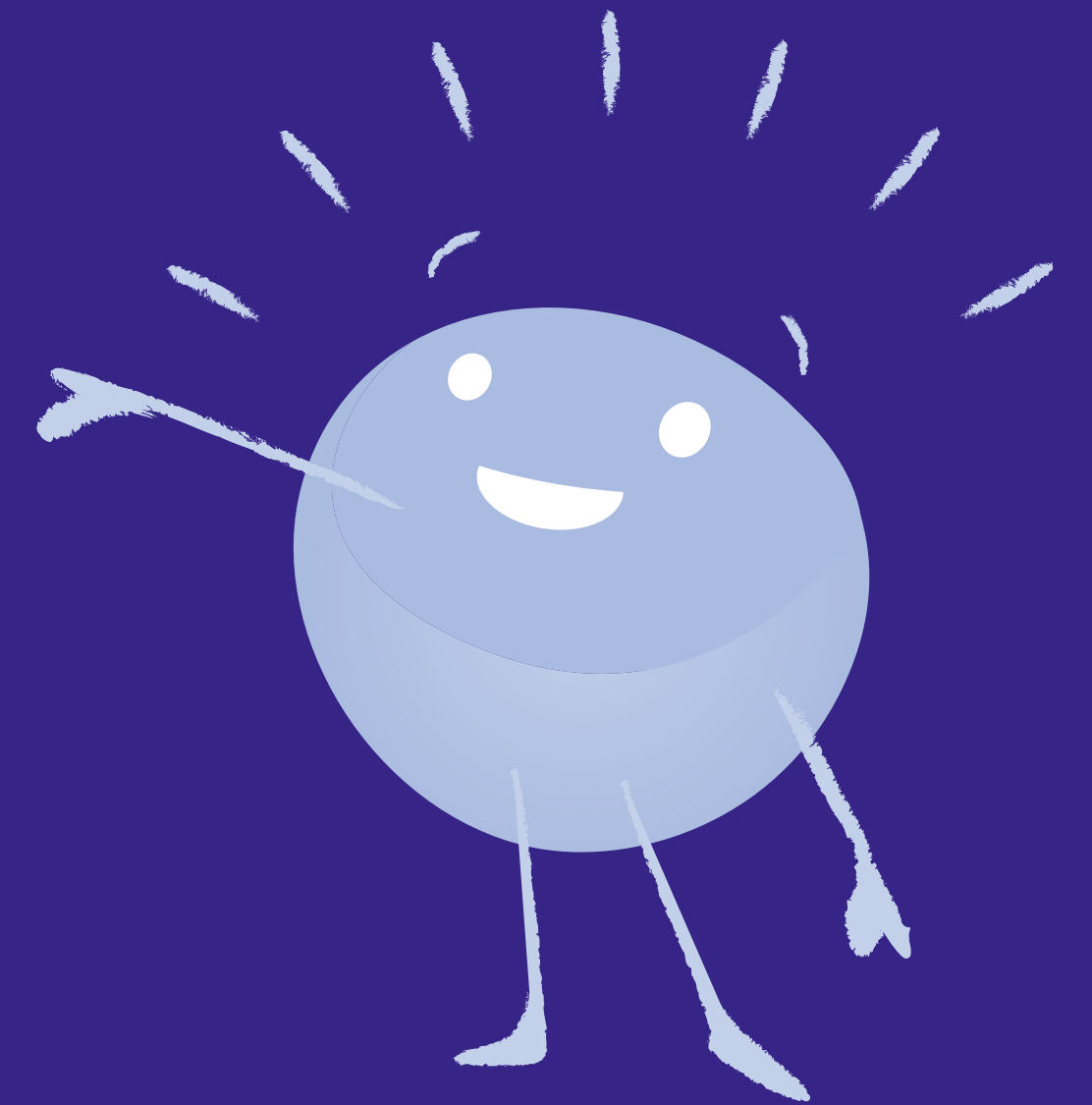


“

We had an amazing time. My twins had so much fun, were so excited and didn't want to leave!

A HUGE thank you to

- Northgate Primary School
- Bishop's Stortford Baptist Church
- South Mill Arts Centre
- Manor Fields Primary School
- Thirst Youth Café



for providing safe, welcoming spaces to help us support our members, some of whom were still readjusting to new routines following the end of the pandemic.

Year in Review (Continued)

Celebrating our Volunteers

At Grove Cottage, we are supported by 50 volunteers who help run our social and educational clubs for people of all ages with learning disabilities.

Our volunteers are crucial to the success of Grove Cottage, and we couldn't run such fantastic clubs without them. This year, we honoured Avril Brampton as our Volunteer of the Year.

Avril began volunteering at Grove Cottage in June 2018 after her husband encouraged her to sign up. Since then, she has been a dedicated supporter of the Music Man Project Hertfordshire and is often seen helping at our fundraising events.



“

What an amazing honour to be chosen as Volunteer of the Year. A huge thank you to everyone!

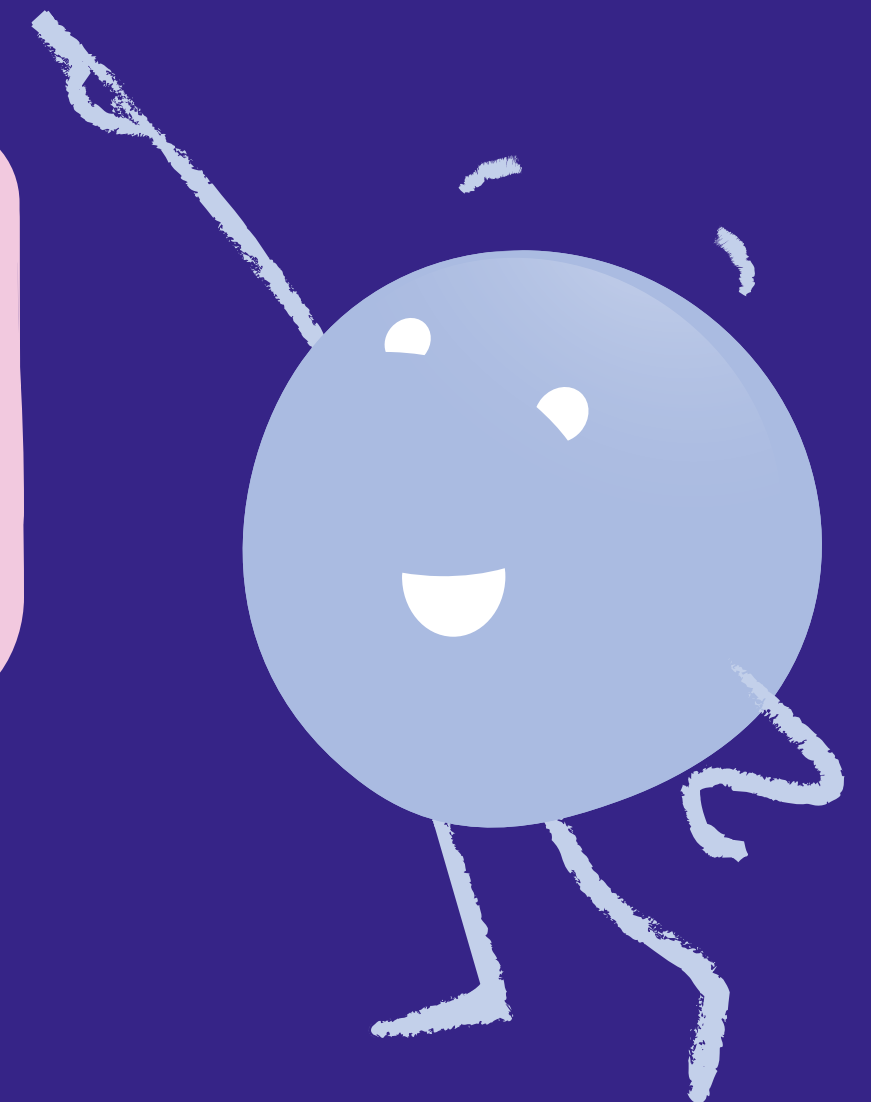
– Avril

“

Your support, Avril, in all areas of volunteering, is greatly appreciated by staff, trustees, and members alike.

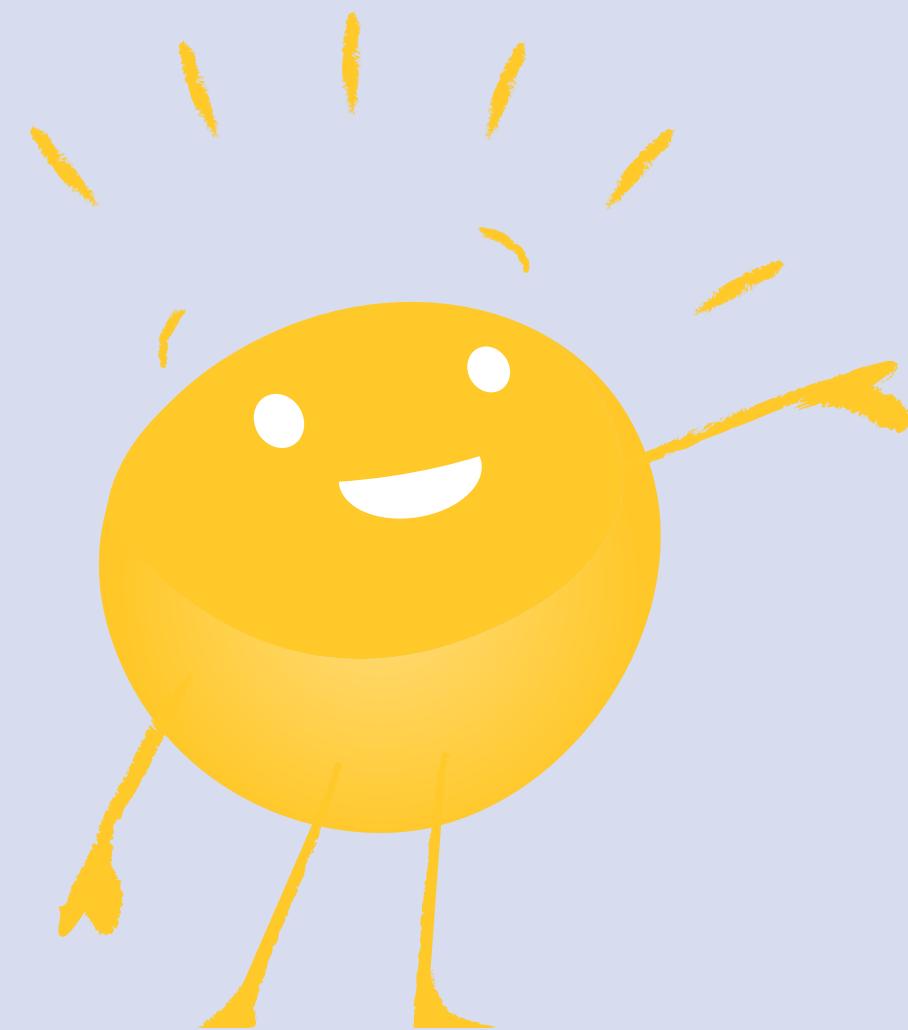
– Kevin Davis, Chair

Thank you to Avril and ALL our amazing Grove Cottage volunteers!



The voice of our members and their families

Grove Cottage's feedback surveys consistently highlight themes of happiness, connection, and personal growth. Respondents frequently mentioned the positive impact on wellbeing, socialisation, independence, and confidence.



A lifeline for our families

Families describe Grove Cottage as a vital source of support, providing much-needed respite and a place for members to socialise with friends, build confidence, and grow independence.

97%

of respondents rated our service as 'Excellent' or 'Good' and 100% would recommend us to other parents and carers.



100%

of respondents agree that Grove Cottage members are: 'happy' and 'have fun' Everyone surveyed confirmed that Grove Cottage creates a:

Positive and enjoyable environment

Statement of Financial Activities (for the year ended 31 August 2023)

(Incorporating Income
and Expenditure Account)

	Note	Unrestricted funds 2023 £	Restricted funds 2023 £	Total funds 2023 £	Total funds 2022 £
Income:					
Donations and legacies	2	117,229	2,194	119,423	104,920
Other trading activities	3	58,283	–	58,283	95,420
Charitable activities	4	162,822	199,354	362,176	337,872
Investments	5	2,741	–	2,741	73
Total income		341,075	201,548	542,623	538,285
Expenditure:					
Raising funds	6	12,161	–	12,161	26,365
Charitable activities	7	280,716	230,308	511,024	529,491
Total resources expended		292,877	230,308	523,185	555,856
Net income / (expenditure)		48,198	(28,760)	19,438	(17,571)
Transfers between funds		–	–	–	–
Change in market value		(12,543)	(8,608)	(21,151)	(131,228)
Net movement in funds for the year		35,655	37,368	(1,713)	(148,799)
Reconciliation of funds					
Total funds brought forward		518,234	1,479,506	1,997,740	2,146,539
Total funds carried forward		553,889	1,442,138	1,996,027	1,997,740

The notes on page 16 to 31 form part of these financial statements.

Summary of income and expenditure (excluding investment and new build activity)
(for the year ended 31 August 2023)

The below table shows the financial results for the year ended 31 August 2023, excluding investments and activity relating to the new build. The Trustees believe this simple schedule gives a useful overview of how the Charity has performed in relation to business as usual operational activities.

Summary of income and expenditure (excluding investment and new build activity):

	Unrestricted Funds	Designated Funds	Restricted Funds	Total
Incoming Resources	341,075	–	196,548	537,623
Resources Expended	(292,877)	–	(212,779)	(505,656)
Surplus / (Deficit) for the year	48,198	–	(16,231)	31,967
Balance at 1 September 2022	321,852	–	69,448	391,300
Balance at 31 August 2023	370,050	–	53,217	423,267

Included in above unrestricted funds is £168,000 relating to fixed assets.

	Unrestricted Funds	Designated Funds	Restricted Funds	Total
Incoming Resources	–	–	5,000	5,000
Resources Expended	–	–	(17,529)	(17,529)
Change in market value	–	–	(21,151)	(21,151)
Surplus / (Deficit) for the year	–	–	(33,680)	(33,680)
Balance at 1 September 2022	–	196,382	1,410,058	1,606,440
Balance at 31 August 2023	–	196,382	1,376,378	1,572,760

Financial Activity in relation to investments and the new build project separately

The notes on page 16 to 31 form part of these financial statements.

Balance Sheet

(as at 31 August 2023)

The directors are satisfied that the Company is entitled to exemption from the requirement to obtain an audit under section 477 of the Companies Act 2006 relating to small companies. The members have not required the company to obtain an audit in accordance with section 476 of the Act.

The directors acknowledge their responsibilities for complying with the requirements of the Companies Act 2006 with respect to accounting records and the preparation of accounts.

The accounts have been prepared in accordance with the provisions in Part 15 of the Companies Act 2006 applicable to companies subject to the small companies regime.



Richard Smith

Treasurer and Trustee

Approved by the Board on 20th May 2024

The notes on page 16 to 31 form part of these financial statements.

	Note	£	2023 £	£	2022 £
Fixed assets					
Tangible assets	12		168,000		168,000
Investments	13		799,354		841,205
Current assets			967,354		1,009,205
Cash at bank		1,057,779		824,505	
Assets held for sale	14	–		199,995	
Debtors	15	7,669		11,413	
		1,065,448		1,035,913	
Creditors: amount falling due within one year	16	(36,775)		(47,378)	
Net current assets			1,028,673		988,535
Net assets			1,996,027		1,997,740
Charity funds					
Designated funds	17		196,382		196,382
Unrestricted fixed assets funds	17		168,000		168,000
Unrestricted general funds	17		189,507		153,852
Restricted funds	17		1,442,138		1,479,506
			1,996,027		1,997,740

Statement of Cash Flows

(for the year ended 31 August 2023)

	2023 £	2022 £
Net cash inflow/(outflow) from operating activities:		
Net movement in funds	(1,713)	(148,799)
Adjustments for:		
Depreciation of tangible fixed assets	–	14,287
Interest from investments	(2,741)	(73)
Decrease/(increase) in debtors	3,744	(7,636)
(Decrease)/increase in creditors	(10,603)	12,122
Proceeds from sale of asset	187,500	–
Loss on sale of asset	12,495	–
Change in investments	41,851	140,369
Net inflow/(outflow) from operating activities	230,533	10,270
Cash flows from investing activities:		
Interest from investments	2,741	73
Net inflow/(outflow) from investing activities	2,741	73
(Decrease)/increase in cash in the year	233,274	10,343
Cash brought forward at 1 September	824,505	814,162
Cash carried forward at 31 August	1,057,779	824,505

The accompanying accounting policies and notes on pages 16 to 31 form an integral part of these financial statements. A net debt reconciliation for the statement of cash flows is disclosed in note 19.

Notes to the Financial Statements (for the year ended 31 August 2023)

1. ACCOUNTING POLICIES

1.1 Basis of preparation of financial statements

The financial statements have been prepared in accordance with Accounting and Reporting by Charities: Statement of Recommended Practice applicable to charities preparing their accounts in accordance with the Financial Reporting Standard applicable in the UK and the Republic of Ireland (FRS 102) (effective 1 January 2019) and the Companies Act 2006.

Bishop's Stortford Mencap meets the definition of a public benefit entity under FRS 102. Assets and liabilities recognised at historical cost or transaction value unless otherwise stated in the relevant accounting policy notes.

The Charity's functional and presentational currency is Pounds Sterling.

1.2 Going Concern

The financial statements have been prepared on a going concern basis as the trustees believe that no material uncertainties exist. The trustees have considered the level of funds held and the expected level of income and expenditure for 12 months from authorising these financial statements. The budgeted income and expenditure is sufficient with the level of reserves for the charity to be able to continue as a going concern. A detailed commentary on its impact is detailed in the Trustees' Report on page 7.

1.3 Company status

The Charity is a company limited by guarantee. The Members of the Company are listed below. In the event of the Charity being wound up, the liability in respect of the guarantee is limited to £10 per Member of the Charity.

Members: Betty Slater, Mary Huxtable, Gwen Cooke, Natalie Trapmore, Nell Turfkruyer, Esther Callaghan, Jackie Parker, Margaret Upton, Esme Willcocks, Andrea Charity, Phil Morgan, Patrick Draper, Kevin Davis*, Richard Smith*, Duncan Murdoch*, Tracy Fisher*, Chris Thorn*, Daniel Wright*, Stephen Downing*, Claire Arnold*

* Denotes Trustee

1.4 Fund accounting

General funds are unrestricted funds which are available for use at the discretion of the Trustees in furtherance of the general objectives of the Charity and which have not been designated for other purposes. Investment income, gains and losses are allocated to the appropriate fund.

Designated funds comprise unrestricted funds that have been set aside by the Trustees for particular purposes. The aim and use of each designated fund is set out in the notes to the financial statements.

Restricted funds are funds which are to be used in accordance with specific restrictions imposed by donors which have been raised by the Charity for particular purposes. The cost of raising and administering such funds are charged against the specific fund. The aim and use of each restricted fund is set out in the notes to the financial statements.

Notes to the Financial Statements (for the year ended 31 August 2023)

1. ACCOUNTING POLICIES continued

1.5 Income

All incoming resources are included in the Statement of Financial Activities when the Charity is legally entitled to the income and the amount can be quantified with reasonable accuracy. Grant income is recognised when there is a firm commitment and certainty that the funds will be received.

Income tax recoverable in relation to donations received under gift aid or deeds of covenant is recognised at the time of the donation.

Income tax recoverable in relation to investment income is recognised at the time the investment income is receivable.

1.6 Expenditure

All expenditure is accounted for on an accruals basis and has been included under expense categories that aggregate all costs for allocation to activities. Where costs cannot be directly attributed to particular activities they have been allocated on a basis consistent with the use of the resources.

Support costs are those costs incurred directly in support of expenditure on the objects of the Charity. Governance costs are those incurred in connection with administration of the Charity and compliance with constitutional and statutory requirements.

1.7 Tangible fixed assets and depreciation

Tangible fixed assets are stated at cost less depreciation. Depreciation is provided at rates calculated to write off the cost of fixed assets, less their estimated residual value, over their expected useful lives on the following bases:

Motor vehicles – 5 years on a straight line basis

Freehold property is considered to have a very long useful economic life and the expected residual value of the asset is not considered to be materially different from its carrying value; as a result depreciation is not considered to be material and therefore has not been charged in the year.

1.8 Gifts in kind

Where services are provided to the Charity as a donation, the contribution is included in the financial statements at an estimate based on the value of the contribution to the Charity.

1.9 Pension Costs

The Charity operates a defined contribution pension scheme for employees. These assets of the scheme are held separately from those of the Charity. The annual contributions payable are charged to the statement of financial activities.

Notes to the Financial Statements (for the year ended 31 August 2023)

1. ACCOUNTING POLICIES continued

1.10 Debtors

Trade and other debtors are recognised at the settlement amount due after any trade discount offered. Prepayments are valued at the amount prepaid net of any trade discounts due. Accrued income and tax recoverable is included at the best estimate of the amounts receivable at the balance sheet date.

1.11 Cash at bank

Cash at bank and cash in hand includes cash and short term highly liquid investments with a short maturity of three months or less from the date of acquisition or opening of the deposit or similar account.

1.12 Creditors

Creditors are recognised where the charity has a present obligation resulting from a past event that will probably result in the transfer of funds to a third party and the amount due to settle the obligation can be measured or estimated reliably. Creditors are normally recognised at their settlement amount after allowing from any trade discounts due.

1.13 Financial Instruments

The charity only has financial assets and liabilities of a kind that qualify as basic financial instruments. Basic financial instruments are initially recognised at transaction value and subsequently measured at their fair value as at the balance sheet date. All financial instruments of the charity are measured at cost.

Financial assets include the bank balances, investments, trade debtors and other debtors but exclude prepayments and taxation.

Financial liabilities include trade creditors, other creditors, accruals and deferred income but exclude social security and other taxes due.

1.14 Key Source of Judgement and Estimate Uncertainty

No significant judgements, accounting policies or assumptions have been made by management in applying the charity's accounting policies.

Notes to the Financial Statements

(for the year ended 31 August 2023)

2. DONATIONS AND LEGACIES

	Unrestricted funds 2023 £	Restricted funds 2023 £	Total funds 2023 £	Total funds 2022 £
Donations and legacies	117,229	2,194	119,423	104,920
	117,229	2,194	119,423	104,920

Income from donations and legacies in 2022 was £84,855 of unrestricted income and £20,065 of restricted income.

3. OTHER TRADING ACTIVITIES

	Unrestricted funds 2023 £	Restricted funds 2023 £	Total funds 2023 £	Total funds 2022 £
Events and activities	58,283	–	58,283	95,420
	58,283	–	58,283	95,420

Income from other trading activities in 2022 was £93,487 of unrestricted income and £1,933 of restricted income.

4. INCOME FROM CHARITABLE ACTIVITIES

	Unrestricted funds 2023 £	Restricted funds 2023 £	Total funds 2023 £	Total funds 2022 £
Clubs	45,532	–	45,532	37,915
Special Needs Nursery	–	86,787	86,787	73,024
Speech and language therapy	13,040	–	13,040	10,929
Grants	104,250	112,567	216,817	216,004
	162,822	199,354	362,176	337,872

Income from charitable activities in 2022 included £111,379 of unrestricted income and £226,493 of restricted income.

Notes to the Financial Statements

(for the year ended 31 August 2023)

5. INVESTMENT INCOME

	Unrestricted funds 2023 £	Restricted funds 2023 £	Total funds 2023 £	Total funds 2022 £
Bank interest	2,741	–	2,741	73

All of the investment income in 2022 was unrestricted.

6. RAISING FUNDS

	Unrestricted funds 2023 £	Restricted funds 2023 £	Total funds 2023 £	Total funds 2022 £
Events and fundraising	12,161	–	12,161	26,365

7. EXPENDITURE BY CHARITABLE ACTIVITY

	Unrestricted funds 2023 £	Restricted funds 2023 £	Total funds 2023 £	Total funds 2022 £
Clubs	35,997	61,971	97,968	85,572
Special Needs Nursery	–	126,379	126,379	119,610
Speech and language therapy	15,269	7,439	22,708	20,219
Support costs (note 8)	229,450	34,520	263,970	304,090
Total	280,716	230,308	511,024	529,491

Expenditure on charitable activities in 2022 included £297,666 of unrestricted expenditure and £231,825 of restricted expenditure.

Notes to the Financial Statements

(for the year ended 31 August 2023)

8. SUPPORT COSTS

	Unrestricted funds 2023 £	Restricted funds 2023 £	Total funds 2023 £	Total funds 2022 £
Staff costs	163,881	1,352	165,233	162,623
Equipment and repairs	3,998	–	3,998	1,009
Insurance	5,759	–	5,759	2,900
Occupancy costs	7,658	–	7,658	6,219
Motor vehicle costs (including depreciation)	1,922	20	1,942	15,399
Miscellaneous	48,643	3,379	52,022	43,678
Loss on disposal of asset	–	12,495	12,495	–
Governance (see note 9)	(2,411)	17,274	14,863	72,262
	229,450	34,520	263,970	304,090

Support costs in 2022 included £256,756 of unrestricted expenditure and £47,334 of restricted expenditure.

9. GOVERNANCE COSTS

	Unrestricted funds 2023 £	Restricted funds 2023 £	Total funds 2023 £	Total funds 2022 £
Legal and professional fees	(2,411)	17,274	14,863	72,262

A negative entry is reported under unrestricted for the year ended 31 August 2023 due to an adjustment processed in the current year relating to a prior year misallocation.

Governance costs in 2022 included £47,594 of unrestricted expenditure and £24,669 of restricted expenditure.

10. NET INCOME / (EXPENDITURE)

This is stated after charging.

	2023 £	2022 £
Depreciation of tangible fixed assets:		
- Owned by the Charity	–	14,287
Independent Examiner's fees	2,394	1,812

Notes to the Financial Statements (for the year ended 31 August 2023)

11. STAFF COSTS

Staff costs were as follows:

	2023 £	2022 £
Wages and salaries	359,623	346,439
Social security	13,167	10,317
Employers pension contributions	4,982	4,419
	377,772	361,175

The average monthly number of employees during the year was as follows:

	2023 No.	2022 No.
Administration	5	5
Fundraising	4	5
Front line services	29	29
	38	39

No employee received remuneration amounting to more than £60,000 in either year (2022 – 0).

The Charity considers its key management personnel to comprise the Trustees. No key management personnel received benefits in the year (2022 – Nil).

Notes to the Financial Statements

(for the year ended 31 August 2023)

12. TANGIBLE FIXED ASSETS

	Freehold property £	Motor vehicles £	Total £
Cost			
At 1 September 2022	168,000	68,580	236,580
Additions	–	–	–
Disposals	–	–	–
At 31 August 2023	168,000	68,580	236,580
Depreciation			
At 1 September 2022	–	68,580	68,580
Charge for the year	–	–	–
At 31 August 2023	–	68,580	68,580
Net book value			
At 31 August 2023	168,000	–	168,000
At 1 September 2022	168,000	–	168,000

13. INVESTMENTS

Listed investments

	2023 £	2022 £
At 1 September 2022	841,205	981,574
Change in market value	(41,851)	(140,369)
At 31 August 2023	799,354	841,205

There are no individual funds with a value greater than 5% of investments.

14. ASSETS HELD FOR SALE

	2023 £	2022 £
Freehold property	–	199,995

The property was sold during the year for £187,500, realising a valuation loss of £12,495.

Notes to the Financial Statements

(for the year ended 31 August 2023)

15. DEBTORS

Due within one year

	2023 £	2022 £
Prepayments and accrued income	4,158	5,246
Other debtors	2,189	1,608
Debtors control account	1,322	4,559
	7,669	11,413

16. CREDITORS

Amounts falling due within one year

	2023 £	2022 £
Accruals and deferred income	29,155	30,308
Creditors control account	1,079	12,135
PAYE and net wages	5,351	3,931
Other creditors	1,191	1,004
	36,775	47,378

Deferred income at start of period

	2023 £	2022 £
Resources deferred during the year	13,750	6,304
Amounts released from previous periods	12,714	13,750
	(13,750)	(6,304)
	12,714	13,750

Deferred income relates to pre-paid income received for the Grove Cottage in the Park fundraiser events that will take place in the next financial year.

Notes to the Financial Statements

(for the year ended 31 August 2023)

17. STATEMENT OF FUNDS

	Brought forward £	Incoming resources £	Resources expended £	Gains/ (losses) £	Carried forward £		Brought forward £	Incoming resources £	Resources expended £	Gains/ (losses) £	Carried forward £
Restricted funds											
Nursery	46,154	88,251	(82,727)	51,678		SLT	–	5,000	(3,372)	–	1,628
Saturday Clubs	4,686	–	(4,686)	–	–	Adult Clubs	–	10,000	(6,562)	–	3,438
Grove Cottage @ Thirst Cafe	–	2,500	(2,500)	–	–	Cottage Kids	–	920	(920)	–	–
Wednesday Adult Club	–	5,000	(5,000)	–	–	Nursery/SLT/clubs	–	2,000	(2,000)	–	–
SLT	–	2,317	(2,317)	–	–	Funds restricted to BAU	69,448	196,548	(200,236)	–	65,760
Music Man Project	–	400	(400)	–	–	New Property	286,493	5,000	–	–	291,493
Get Active	–	3,000	(2,632)	–	368	New Property Fund	1,108,382	–	(11,055)	(21,151)	1,076,176
Holiday Clubs	–	3,000	(1,858)	–	1,142	New Property (non-material costs)	15,183	–	(6,474)	–	8,709
Nursery	–	30,641	(30,641)	–	–	Total restricted funds	1,479,506	201,548	(217,765)	(21,151)	1,442,138
Family Swim Days	–	500	(500)	–	–	Designated funds – property	196,382	–	–	–	196,382
Holiday Clubs	375	500	(875)	–	–	General unrestricted funds	321,852	341,075	(305,420)	–	357,507
Clubs/ SLT	–	10,000	(10,000)	–	–	Total funds	1,997,740	542,623	(523,185)	(21,151)	1,996,027
Staff Training	–	2,000	(2,000)	–	–	Unrestricted funds					
Clubs helping Essex residents	618	–	(618)	–	–	Included within general unrestricted funds are fixed assets of £168,000, leaving free reserves of £189,507.					
Colchester Zoo Trip	–	176	(176)	–	–	Designated funds					
Adult Club and Performing Arts Club	5,415	9,879	(9,542)	–	5,753	The Trustees have designated funds to pay for the redevelopment of the current site. This currently stands at £196,382.					
“Dreams & Wishes” (misc.)	796	–	(796)	–	–	Restricted funds					
Nursery Expenses	1,686	3,000	(2,934)	–	1,753	Restricted funds totals £1,442,138 of which £1,376,378 of this is restricted to the redevelopment project.					
Get Active Club	661	–	(661)	–	–	Other restricted funds includes amounts where funds are to be used in accordance with specific restrictions imposed by donors which have been raised by the Charity for particular purposes.					
Cottage Kids	–	1,000	(1,000)	–	–	Grove Cottage runs an Ofsted Regulated Early Years Special Needs Nursery which provides specialist education and social support for pre-school children with learning disabilities and special additional needs. Total restricted funds carried forward for the year relating to the nursery are £51,678.					
Get Active Club and Grove Grows	2,456	–	(2,456)	–	–						
Grove Cottage @ Thirst Cafe	1,986	–	(1,986)	–	–						
Saturday Clubs	2,614	–	(2,614)	–	–						
Cottage Kids Club	2,000	–	(2,000)	–	–						
Grove Grows	–	4,233	(4,233)	–	–						
Grove Grows	–	730	(730)	–	–						
Music Man Project	–	1,500	(1,500)	–	–						
Nursery	–	10,000	(10,000)	–	–						

Notes to the Financial Statements

(for the year ended 31 August 2023)

PRIOR YEAR'S STATEMENT OF FUNDS

	Brought forward £	Incoming resources £	Resources expended £	Transfers in/ out £	Carried forward £		Brought forward £	Incoming resources £	Resources expended £	Transfers in/ out £	Carried forward £
Restricted funds						Saturday Clubs	–	3,000	(386)	–	2,614
Nursery	48,562	73,089	(75,497)	–	46,154	Cottage Kids Club	–	2,000	–	–	2,000
Saturday Clubs	6,823	10,000	(12,137)	–	4,686	Funds restricted to BAU	87,965	188,679	(207,196)	–	69,448
Grove Cottage @ Thirst Cafe	11,387	–	(11,387)	–	–	New Property	266,493	20,000	–	–	286,493
Wednesday Adult Club	105	–	(105)	–	–	New Property Fund	1,239,610	(131,228)	–	–	1,108,382
Day Trips for Nursery	1,764	–	(1,764)	–	–	New Property (non-material costs)	–	39,812	(24,629)	–	15,183
Nursery keyworkers	–	20,900	(20,900)	–	–	Total restricted funds	1,594,068	117,263	(231,825)	–	1,479,506
Speech and Language Therapy	–	9,370	(9,370)	–	–	Designated funds – property	229,500	–	(33,118)	–	196,382
Youth Volunteering	2,758	(2,341)	(417)	–	–	General unrestricted funds	322,971	289,794	(290,913)	–	321,852
Music Man Project	2,582	–	(2,582)	–	–	Total funds	2,146,539	407,057	(555,856)	–	1,997,740
Get Active	–	4,492	(4,492)	–	–						
Covid Recovery	–	6,000	(6,000)	–	–						
Holiday Clubs	–	1,500	(1,500)	–	–						
Nursery	–	22,500	(22,500)	–	–						
Minibus	13,984	–	(13,984)	–	–						
Musical Instruments	–	993	(993)	–	–						
Holiday Clubs	–	1,500	(1,125)	–	375						
Holiday Clubs	–	5,000	(5,000)	–	–						
Musical Instruments	–	1,303	(1,303)	–	–						
Staff Training	–	1,540	(1,540)	–	–						
Clubs helping Essex residents	–	5,785	(5,167)	–	618						
Swimming Day	–	573	(573)	–	–						
Colchester Zoo Trip	–	172	(172)	–	–						
Adult Club and Performing Arts Club	–	8,444	(3,029)	–	5,415						
“Dreams & Wishes” (misc.)	–	1,933	(1,137)	–	796						
Nursery Expenses	–	2,000	(314)	–	1,686						
Get Active Club	–	1,615	(954)	–	661						
Cottage Kids Club	–	1,000	(1,000)	–	–						
Get Active Club and Grove Grows	–	2,500	(44)	–	2,456						
Grove Cottage @ Thirst Cafe	–	3,811	(1,825)	–	1,986						

Notes to the Financial Statements

(for the year ended 31 August 2023)

18. ANALYSIS OF NET ASSETS BETWEEN FUNDS

	Unrestricted funds 2023 £	Restricted funds 2023 £	Designated funds 2023 £	Total funds 2023 £
Tangible fixed assets	168,000	–	–	168,000
Investments	–	799,354	–	799,354
Current assets	226,282	642,784	196,382	1,065,449
Creditors due within 1 year	(36,775)	–	–	(36,775)
Total	357,507	1,442,138	196,382	1,996,027

ANALYSIS OF NET ASSETS BETWEEN FUNDS – PRIOR YEAR (RESTATED)

	Unrestricted funds 2022 £	Restricted funds 2022 £	Designated funds 2022 £	Total funds 2022 £
Tangible fixed assets	168,000	–	–	168,000
Investments	–	841,205	–	841,205
Current assets	201,230	638,301	196,382	1,035,913
Creditors due within 1 year	(47,378)	–	–	(47,378)
Total	321,852	1,479,506	196,382	1,997,740

19. ANALYSIS OF CHANGES IN NET DEBT

This note refers to the cash flow note on page 19.

	Opening balance 2022 £	Cash flows £	Other non cash changes £	Closing balance 2023 £
Cash and cash equivalents	824,505	233,274	–	1,057,779
Total net debt	824,505	233,274	–	1,057,779

20. RELATED PARTY TRANSACTIONS

During the year, no Trustees received any benefits in kind (2022 – £NIL).

During the year, no Trustees received reimbursement of expenses (2022 – £NIL). There were no related party transactions (2022 – £NIL).

Enriching lives, Growing together

Grove Cottage Address

151 London Road,
Bishop's Stortford,
Hertfordshire
CM23 3JX

Registered Charity Number

1122298

Socials



Find out more

www.mencapgrovecottage.org

